

## Z1188 LARGE CAPACITY OIL INTERCEPTOR

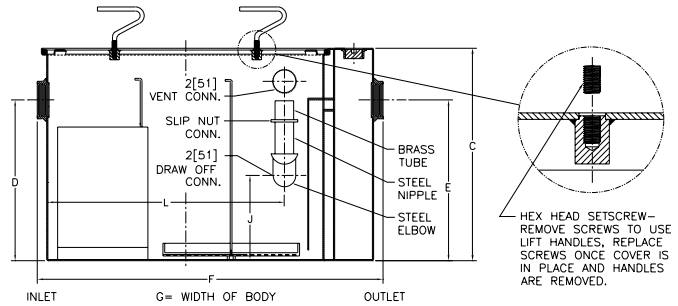


### ENGINEERING SPECIFICATION

Zurn Z1188 oil interceptor features large capacity, acid resistant coated interior and fabricated steel exterior, bronze cleanout plug and visible double wall trap seal, removable combination pressure equalizing/flow-diffusing baffle and sediment bucket, horizontal baffle, adjustable oil draw-off, and vent connections (either side). Complete with secured, gasketed, non-skid cover with removable lift handles and flow control fitting. Regularly furnished with inlet and outlet in high position.

### CAUTION

Interceptors must be maintained periodically in order to ensure proper operation of the system. Follow cleaning schedule based on usage.



PREFIXES	DESCRIPTION	SIZE	LIST PRICE
<b>Z1188*</b>	Acid Resistant Coated Fabricated Steel	75	<b>28,571.00</b>
		100	<b>30,980.00</b>
		125	<b>36,142.00</b>
		150	<b>38,365.00</b>
		200	<b>54,197.00</b>
		250	<b>62,761.00</b>
		300	<b>71,066.00</b>
		350	<b>79,318.00</b>
		400	<b>POA</b>
450	<b>POA</b>		
500	<b>POA</b>		

SUFFIXES	DESCRIPTION	ADD	EA. ADDITIONAL	
			SIZE	1" OVER 10" UP TO 10"
<b>-E</b>	Acid Resistant Coated interior and exterior fabricated steel extension section. (Specify 'C' dimension required for recessed installation.)	75	<b>259.00</b>	<b>3,920.00</b>
		100	<b>277.00</b>	<b>4,088.00</b>
		125	<b>299.00</b>	<b>4,251.00</b>
		150	<b>317.00</b>	<b>4,417.00</b>
		200	<b>333.00</b>	<b>6,319.00</b>
		250	<b>365.00</b>	<b>8,214.00</b>
		300	<b>410.00</b>	<b>9,984.00</b>
		350	<b>459.00</b>	<b>11,828.00</b>
		400	<b>504.00</b>	<b>13,797.00</b>
		450	<b>530.00</b>	<b>16,102.00</b>
500	<b>547.00</b>	<b>18,418.00</b>		

BEST SELLERS	LIST PRICE
Z1188-100-4IP	<b>30,980.00</b>
Z1188-125-3IP	<b>36,142.00</b>
Z1188-150-4IP	<b>38,365.00</b>
Z1188-200-4IP	<b>54,197.00</b>
Z1188-500-6IP	<b>POA</b>

Flow Rate gpm [LPM]	Inlet/Outlet inch [mm]	Water Capacity gallon [L]	Approximate Weight lb [kg]	No. of Covers	Dimensions in inches [mm]					
					C	D/E	F	G	J	L
75 [284]	3 [76]	65 [246]	332 [151]	1	22-3/4 [578]	18-1/2 [470]	36 [914]	28-5/8 [727]	6-7/8 [175]	25-3/4 [654]
100 [379]		110 [416]	432 [196]		27 [686]	23 [584]	42-3/4 [1086]	33-5/8 [854]	11-3/8 [289]	30-1/8 [765]
125 [473]		150 [568]	780 [354]		30-1/8 [765]	24-1/2 [622]	49-1/4 [1251]	40 [1016]	12-7/8 [327]	36-5/8 [930]
150 [568]	4 [102]	190 [719]	888 [403]	2	30-3/4 [781]	25-1/4 [641]	56 [1422]	41-3/8 [1051]	13-1/8 [333]	43-7/8 [1114]
200 [757]		265 [1003]	1055 [479]		35-1/2 [902]	29-7/8 [759]	61 [1549]	43-5/8 [1108]	17-3/4 [451]	46-5/8 [1184]
250 [946]	5 [127]	460 [1741]	1438 [652]	2	41 [1041]	36 [914]	71 [1803]	51-5/8 [1311]	23-3/8 [594]	56-5/8 [1438]
300 [1136]		660 [2498]	1840 [835]		46-1/4 [1175]	39-5/8 [1006]	80 [2032]	58-3/8 [1483]	27 [686]	65-5/8 [1667]
350 [1325]		860 [3255]	2180 [989]		50-1/2 [1283]	43-7/8 [1114]	87 [2210]	63-5/8 [1616]	30-3/4 [781]	74-1/8 [1883]
400 [1514]	6 [152]	1090 [4126]	2536 [1150]	3	54-1/4 [1378]	47-5/8 [1210]	94 [2388]	67 [1702]	34-1/2 [876]	79-1/8 [2010]
450 [1703]		1275 [4826]	2816 [1277]		55-1/4 [1403]	48-5/8 [1235]	100 [2540]	72 [1829]	35-1/2 [902]	85-3/8 [2169]
500 [1893]		1435 [5432]	2970 [1347]		57-1/4 [1454]	51-5/8 [1311]	104 [2642]	74 [1880]	38-1/2 [978]	88-3/8 [2245]

SUFFIXES	DESCRIPTION	SIZE	ADD
<b>-HD</b>	Heavy-duty traffic cover rated at 10,000 lbs. maximum safe live load. An increased 'C' dimension is required when Heavy Duty Cover (-HD) option is specified. (See -HD Specification Sheet.)	75	<b>8,749.00</b>
		100	<b>12,038.00</b>
		125	<b>13,209.00</b>
		150	<b>15,457.00</b>
		200	<b>17,629.00</b>
		250	<b>24,332.00</b>
		300	<b>31,237.00</b>
		350	<b>36,834.00</b>
		400	<b>42,419.00</b>
<b>-K</b>	Anchor flange 1-3/4" down from top and 2" wide. A 3" minimum extension height is required when -K option is specified.	75	<b>1,873.00</b>
		100	<b>2,096.00</b>
		125	<b>2,511.00</b>
		150	<b>2,925.00</b>
		200	<b>3,134.00</b>
		250	<b>4,187.00</b>
		300	<b>4,734.00</b>
		350	<b>5,275.00</b>
		400	<b>5,603.00</b>
		450	<b>5,934.00</b>
<b>-KC</b>	Anchor flange 1-3/4" down from top and 2" wide with clamp collar. A 3" minimum extension height is required when -KC option is specified.	75	<b>3,393.00</b>
		100	<b>3,798.00</b>
		125	<b>4,251.00</b>
		150	<b>4,703.00</b>
		200	<b>5,498.00</b>
		250	<b>7,131.00</b>
		300	<b>8,000.00</b>
		350	<b>8,863.00</b>
		400	<b>9,419.00</b>
		450	<b>9,982.00</b>
<b>-PW</b>	Plug Wrench	500	<b>10,547.00</b>
			<b>83.00</b>

\*Regularly furnished unless otherwise specified.

For additional product information, please visit [www.zurn.com](http://www.zurn.com)

Items designated as Best Sellers are most specified and are generally in stock for shipment.

INTRO  
ROOF DRAINS  
FLOOR DRAINS  
T, P, BW VALVES  
INTERCEPTORS  
CARRIERS  
HYDRANTS  
CLEANOUTS  
WHA  
SS DRAINS  
FAB SS DRAINS  
SANI-FLOOR  
TECH INFO